



**KEDIA** ADVISORY

# DAILY BASE METALS REPORT

30 Jan 2024

- ALUMINIUM
- COPPER
- LEAD
- ZINC



**Kedia Stocks & Commodities Research Pvt. Ltd.**

Research Advisory | White Labelling | Digital Marketing



## MCX Basemetals Update

Commodity	Expiry	Open	High	Low	Close	% Change
COPPER	29-Feb-24	727.95	732.50	726.45	731.95	2.45
ZINC	29-Feb-24	227.85	228.20	226.20	227.15	-1.73
ALUMINIUM	29-Feb-24	204.00	204.75	202.85	204.15	-4.11
LEAD	29-Feb-24	182.50	183.45	182.45	183.20	2.11

## Open Interest Update

Commodity	Expiry	% Change	% Oi Change	Oi Status
COPPER	29-Feb-24	0.34	2.18	Fresh Buying
ZINC	29-Feb-24	-0.42	-1.73	Long Liquidation
ALUMINIUM	29-Feb-24	0.54	-4.11	Short Covering
LEAD	29-Feb-24	0.30	2.11	Fresh Buying

## International Update

Commodity	Open	High	Low	Close	% Change
Lme Copper	8541.00	8592.50	8476.00	8580.00	0.40
Lme Zinc	2581.00	2584.50	2551.50	2562.00	-0.60
Lme Aluminium	2265.50	2272.00	2240.00	2256.00	-0.81
Lme Lead	2173.00	2188.00	2160.50	2181.00	0.79
Lme Nickel	16800.00	16775.00	16790.00	16785.00	0.50

## Ratio Update

Ratio	Price	Ratio	Price
Gold / Silver Ratio	86.17	Crudeoil / Natural Gas Ratio	36.67
Gold / Crudeoil Ratio	9.75	Crudeoil / Copper Ratio	8.74
Gold / Copper Ratio	85.21	Copper / Zinc Ratio	3.22
Silver / Crudeoil Ratio	11.31	Copper / Lead Ratio	4.00
Silver / Copper Ratio	98.88	Copper / Aluminium Ratio	3.59

## TECHNICAL SNAPSHOT

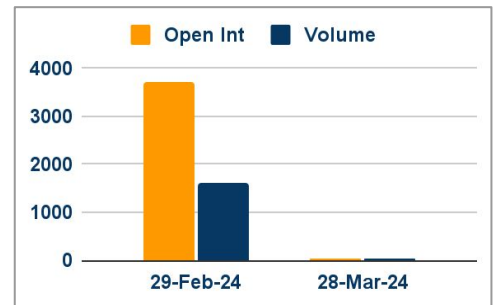


**BUY ALUMINIUM FEB @ 203 SL 201 TGT 205-206. MCX**

### OBSERVATIONS

- Aluminium trading range for the day is 202-205.8.
- Aluminium seen supported by Chinese policy support
- China's imports of aluminum increased by 28% in 2023
- China's central bank injects \$140 billion into banking system

### OI & VOLUME



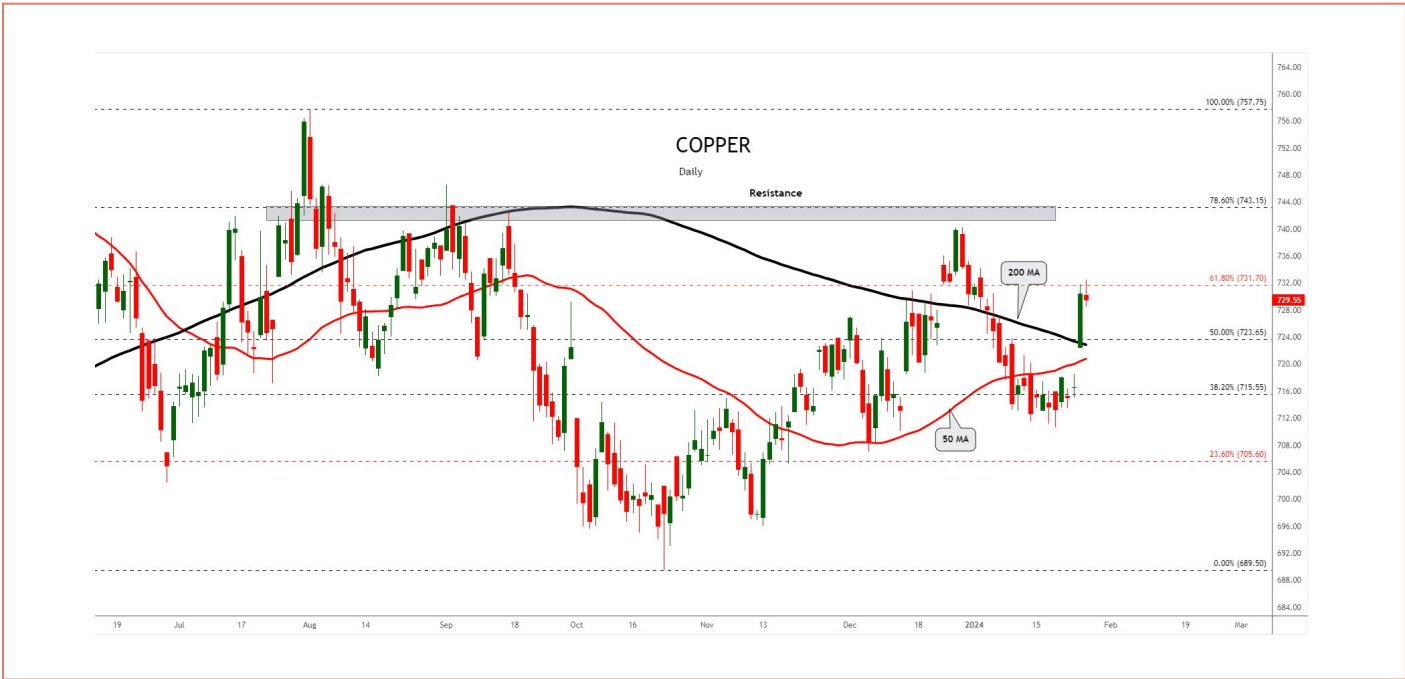
### SPREAD

Commodity	Spread
ALUMINIUM MAR-FEB	2.45
ALUMINI FEB-JAN	1.85

### TRADING LEVELS

Commodity	Expiry	Close	R2	R1	PP	S1	S2
ALUMINIUM	29-Feb-24	204.15	205.80	205.00	203.90	203.10	202.00
ALUMINIUM	28-Mar-24	206.60	207.70	207.20	206.20	205.70	204.70
ALUMINI	31-Jan-24	202.30	202.80	202.50	202.30	202.00	201.80
ALUMINI	29-Feb-24	204.15	205.50	204.80	203.90	203.20	202.30
Lme Aluminium		2256.00	2288.00	2272.00	2256.00	2240.00	2224.00

**TECHNICAL SNAPSHOT**



**BUY COPPER FEB @ 729 SL 725 TGT 733-736. MCX**

**OBSERVATIONS**

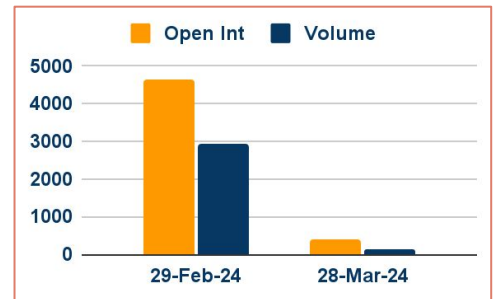
Copper trading range for the day is 724.2-736.4.

Copper gains due to optimism on policy support in China.

China's central bank announced a deep cut to bank reserves, injecting \$140 billion into the banking system.

The global refined copper market showed a deficit of 119,000 metric tons in November.

**OI & VOLUME**



**SPREAD**

Commodity	Spread
COPPER MAR-FEB	5.80

**TRADING LEVELS**

Commodity	Expiry	Close	R2	R1	PP	S1	S2
COPPER	29-Feb-24	731.95	736.40	734.20	730.30	728.10	724.20
COPPER	28-Mar-24	737.75	741.70	739.70	736.00	734.00	730.30
Lme Copper		8580.00	8666.50	8624.00	8550.00	8507.50	8433.50

## TECHNICAL SNAPSHOT



**BUY ZINC FEB @ 226 SL 224 TGT 229-231. MCX**

### OBSERVATIONS

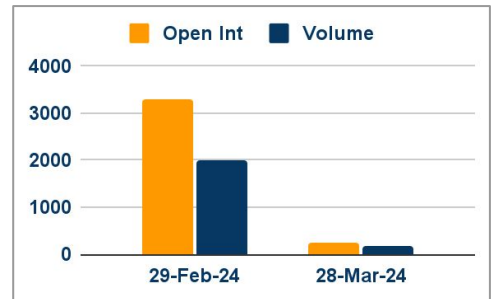
Zinc trading range for the day is 225.2-229.2.

Zinc dropped as subdued demand outlook from China weighed on sentiment.

China's cabinet pledges to stabilize market confidence

Global zinc market deficit increased in November 2023

### OI & VOLUME

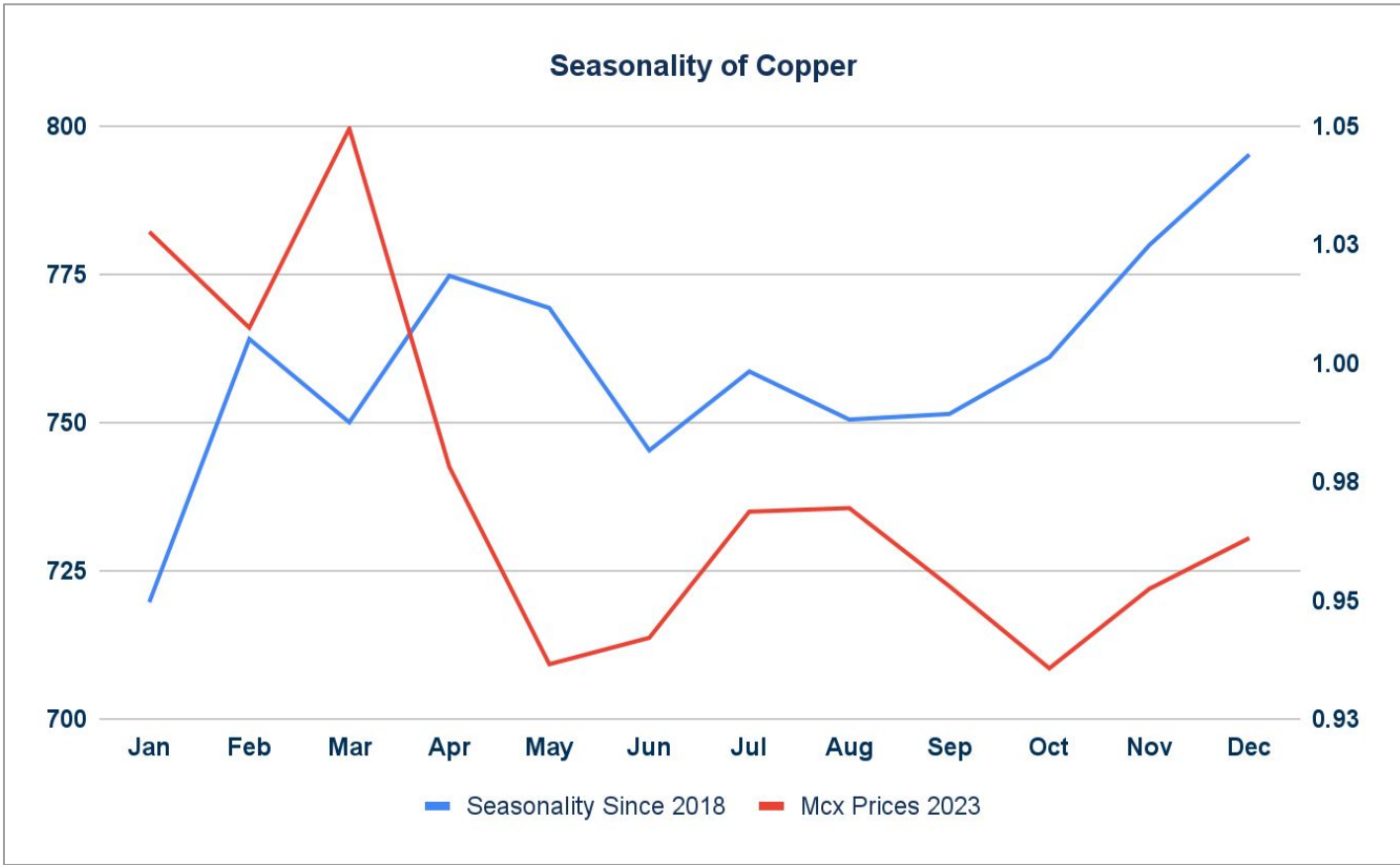
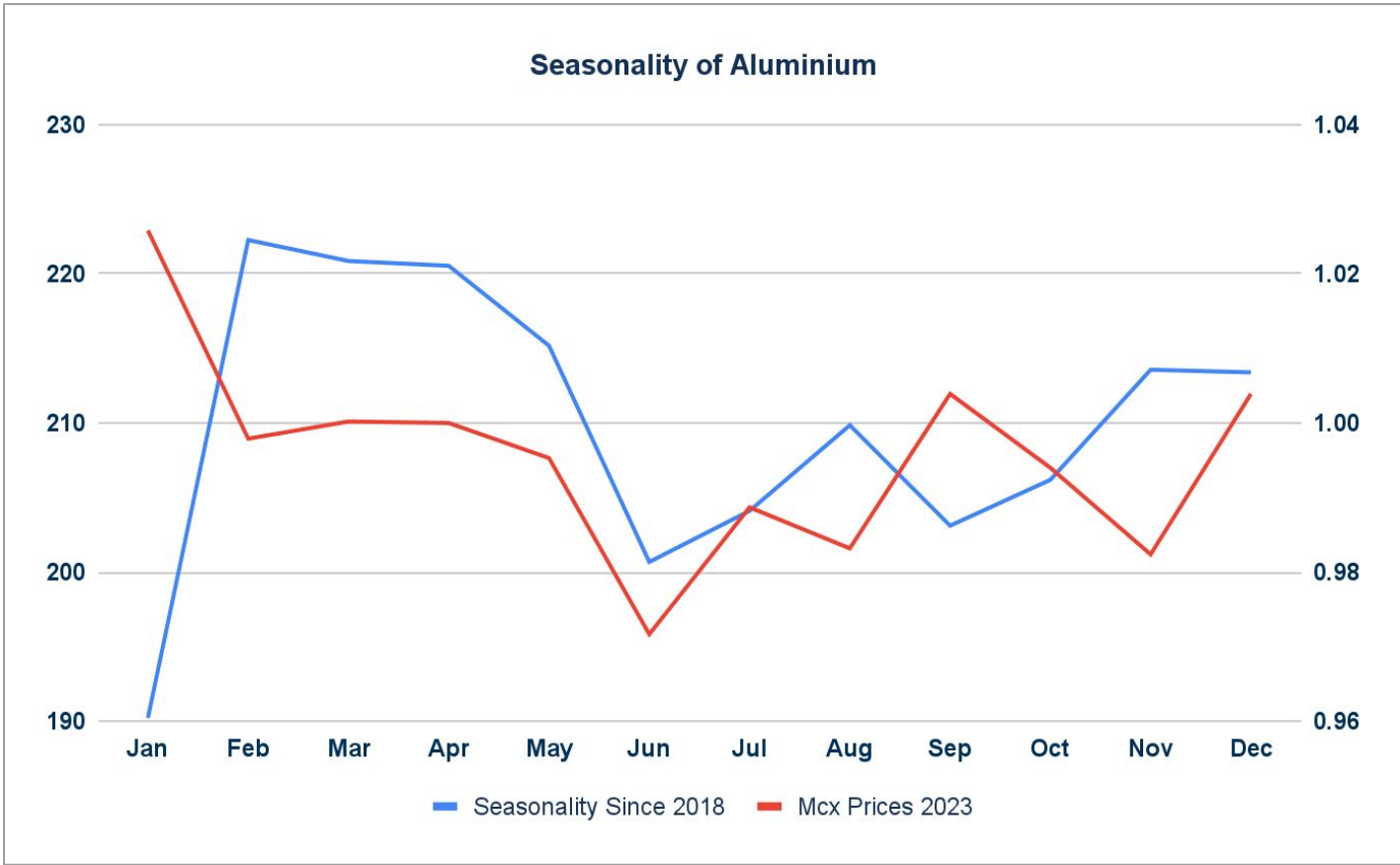


### SPREAD

Commodity	Spread
ZINC MAR-FEB	1.40
ZINCMINI FEB-JAN	0.35

### TRADING LEVELS

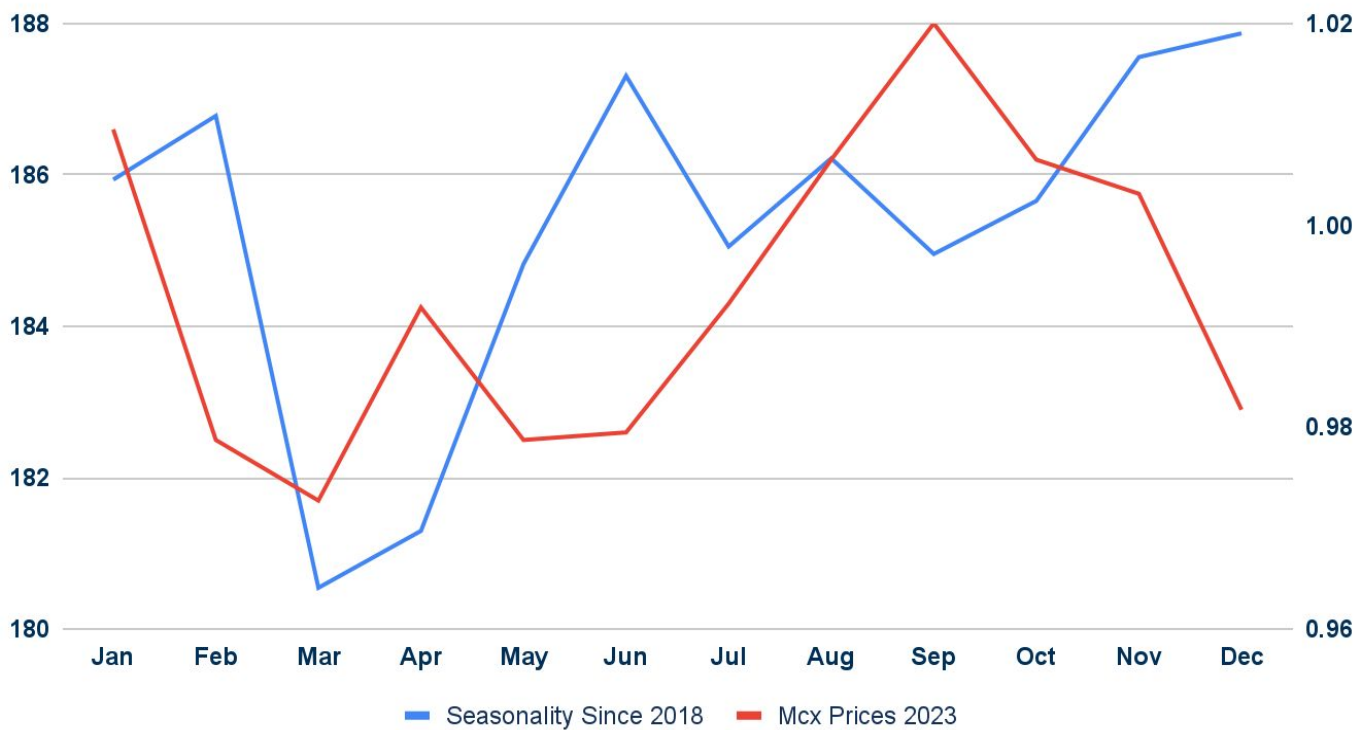
Commodity	Expiry	Close	R2	R1	PP	S1	S2
ZINC	29-Feb-24	227.15	229.20	228.20	227.20	226.20	225.20
ZINC	28-Mar-24	228.55	230.50	229.50	228.60	227.60	226.70
ZINCMINI	31-Jan-24	226.65	227.50	227.10	226.70	226.30	225.90
ZINCMINI	29-Feb-24	227.00	229.20	228.20	227.20	226.20	225.20
Lme Zinc		2562.00	2599.00	2580.50	2566.00	2547.50	2533.00



### Seasonality of Zinc



### Seasonality of Lead



## Weekly Economic Data

Date	Curr.	Data	Date	Curr.	Data
Jan 30	EUR	German Prelim GDP q/q	Feb 1	EUR	Unemployment Rate
Jan 30	USD	CB Consumer Confidence	Feb 1	USD	Unemployment Claims
Jan 30	USD	JOLTS Job Openings	Feb 1	USD	Prelim Nonfarm Productivity q/q
Jan 30	EUR	German Nagel Speaks	Feb 1	USD	Prelim Unit Labor Costs q/q
Jan 31	EUR	German Unemployment Change	Feb 1	USD	Final Manufacturing PMI
Jan 31	USD	ADP Non-Farm Change	Feb 1	USD	ISM Manufacturing PMI
Jan 31	USD	Employment Cost Index q/q	Feb 1	USD	ISM Manufacturing Prices
Jan 31	USD	Chicago PMI	Feb 1	USD	Construction Spending m/m
Jan 31	USD	Crude Oil Inventories	Feb 1	USD	Natural Gas Storage
Feb 1	USD	Federal Funds Rate	Feb 2	USD	Average Hourly Earnings m/m
Feb 1	EUR	Spanish Manufacturing PMI	Feb 2	USD	Non-Farm Employment Change
Feb 1	EUR	German Final Manufacturing PMI	Feb 2	USD	Unemployment Rate
Feb 1	EUR	Final Manufacturing PMI	Feb 2	USD	Revised UoM Consumer Sentiment

## News you can Use

The S&P Global US Manufacturing PMI unexpectedly jumped to 50.3 in January 2024 from 47.9 in December 2023, compared to forecasts of 47.9, preliminary estimates showed. The reading was the highest since October 2022 and pointed to an improvement in operating conditions at goods producers. Stocks of finished goods saw a renewed expansion, indicating the fastest rise in post-production inventories since November 2022 as companies anticipate greater new orders in the coming months. The S&P Global US Services PMI surged to a 7-month high of 52.9 in January 2024, surpassing market expectations of 51, preliminary estimates showed. Improved demand conditions were associated with increased client referrals and reports of customers depleting their buffer stocks. However, there was a marginal decline in new export orders. The rise in employment can be attributed to efforts made by service providers to clear backlogs of work, as well as the accumulation of incomplete business in January. In an attempt to compete and attract new orders, service providers have kept the rise in output charges at its slowest pace since June 2020, when the current sequence of inflation began.

Euro zone business activity contracted again this month, albeit at a shallower pace than in December, as an improvement in the manufacturing outlook was partly offset by a steeper decline in the bloc's dominant services industry, a survey showed. HCOB's preliminary euro zone Composite PMI, compiled by S&P Global, rose to 47.9 this month from December's 47.6, just shy of expectations in a poll for 48.0 but marking its eighth month below the 50 level separating growth from contraction. Germany and France, the 20-country currency union's biggest economies, both saw an improvement in their manufacturing PMIs but a deterioration in their services ones. British services firms saw another pick-up in growth this month, adding to signs of a modest recovery in the sluggish economy, although struggling factories are now being hit by the inflationary impact of tensions in the Red Sea. Attacks by Yemen's Iran-aligned Houthis in the Red Sea are disrupting shipping and the delivery times index in the euro zone factory PMI dropped significantly and was below 50 for the first time in a year. The European Union faces a risk of consumer prices surging and growth slowing due to these disruptions, though it has yet to feel an economic impact, a top EU official said.



This Report is prepared and distributed by Kedia Stocks & Commodities Research Pvt Ltd. Our SEBI REGISTRATION NUMBER - INH000006156. for information purposes only. The recommendations, if any, made herein are expressions of views and/or opinions and should not be deemed or construed to be neither advice for the purpose of purchase or sale through KSCRPL nor any solicitation or offering of any investment /trading opportunity. These information/opinions/ views are not meant to serve as a professional investment guide for the readers. No action is solicited based upon the information provided herein. Recipients of this Report should rely on information/data arising out of their own investigations. Readers are advised to seek independent professional advice and arrive at an informed trading/investment decision before executing any trades or making any investments. This Report has been prepared on the basis of publicly available information, internally developed data and other sources believed by KSCRPL to be reliable. KSCRPL or its directors, employees, affiliates or representatives do not assume any responsibility for or warrant the accuracy, completeness, adequacy and reliability of such information/opinions/ views. While due care has been taken to ensure that the disclosures and opinions given are fair and reasonable, none of the directors, employees, affiliates or representatives of KSCRPL shall be liable for any direct, indirect, special, incidental, consequential, punitive or exemplary damages, including lost profits arising in any way whatsoever from the information/opinions/views contained in this Report. The possession, circulation and/or distribution of this Report may be restricted or regulated in certain jurisdictions by appropriate laws. No action has been or will be taken by KSCRPL in any jurisdiction (other than India), where any action for such purpose (s) is required. Accordingly, this Report shall not be possessed, circulated and/ or distributed in any such country or jurisdiction unless such action is in compliance with all applicable laws and regulations of such country or jurisdiction. KSCRPL requires such a recipient to inform himself about and to observe any restrictions at his own expense, without any liability to KSCRPL. Any dispute arising out of this Report shall be subject to the exclusive jurisdiction of the Courts in India.

## KEDIA ADVISORY

### KEDIA STOCKS & COMMODITIES RESEARCH PVT LTD

Mumbai, India

SEBI REGISTRATION NUMBER - INH000006156

For more details, please contact: +91 93234 06035 / 96195 51022

Email: [info@kediaadvisory.com](mailto:info@kediaadvisory.com)

Regd.Off.: 1, 2, 3 & 4, 1st Floor, Tulip Bldg, Flower Valley Complex, Khadakpada Circle,  
Kalyan-(W), Mumbai-421301

